



# Marshalls

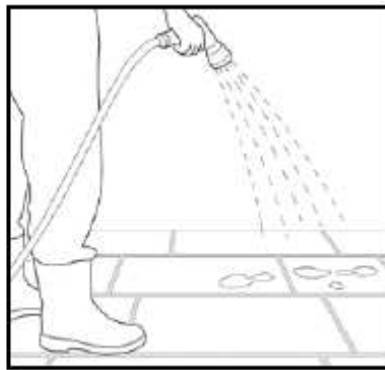
*Creating Better Spaces*

## INSTALLATION DETAILS FOR SYMPHONY®

### JOINTING COMPOUND

#### Health and Safety Information

Safe working practices should be employed at all times during the construction process and all necessary Personal Protective Equipment (PPE) should be worn.



Rake out any excess mortar in the joints to the base of the flag. Thoroughly saturate the paving surface.

This can be achieved by:

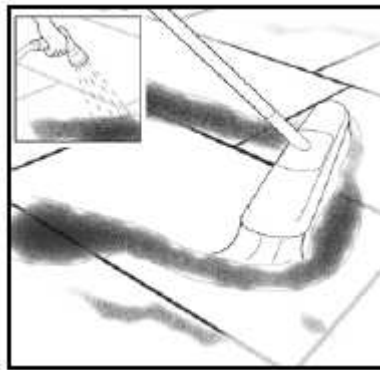
- Insert packers/spacers between the paving units
- Ensure the packers/spacers are touching the MOT Type 1 sub-base, as this will allow free flow of water to the sub-base
- Remove packers/spacers after 24 hours then joint up with Symphony Jointing Compound as per the instructions below

**NOTE:** It is impossible to over water the paved area. Failure to wet the paving correctly could result in temporary staining of the paving surface.

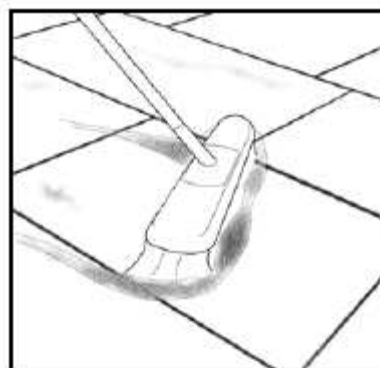


Open the tub and cut open the vacuum bag. Empty the joint compound material onto the paving surface and start to brush into the joints. Continuously keep the paving area saturated with water and so not allow area to dry out.

\* To assist the jointing compound into the joint, another option is to add water, turning the jointing compound into a slurry so it will flow easily into the joint.



Brush the jointing material into the joint areas with plenty of water to allow it to flow into the joints easily. Brush material diagonally (45°) to the joint. Ensure that the joint void is completely full. The jointing material must be used within one hour of opening the vacuum pack.



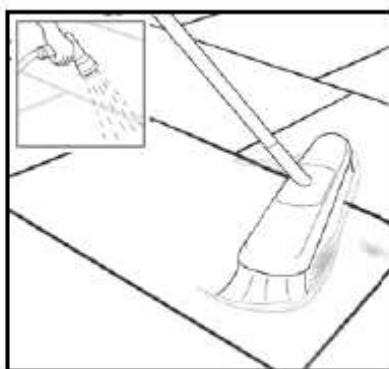
Sweep off any excess jointing compound and store remainder in the tub. Fill tub to the top with water making sure the entire jointing compound is covered by at least

80mm (3 inches) of water. Product can then be stored for up to one year as long as the product remains fully immersed in water.



Strike off the joint using a Marshalltown jointer or similar tool. Top up any sagging joints with more jointing material and strike again if required.

\* If necessary, to get the jointing material deeper into the joint you may delicately chop in with the side of a trowel or similar tool, being careful not to strike the surface of the paving. Carry out this procedure prior to striking off.



To finish the process, gently spray the surface with a wide angled spray and brush excess joint compound off the surface using a soft bristled brush. If you require a smoother 'struck' finish to your joint, allow the joint to dry out a little and iron the joint using a Marshalltown jointer or similar.

**PAVING MUST BE LAID ON A FULL BED OF MORTAR WITH SUITABLE DRAINAGE PROVISION THROUGH THE BEDDING LAYER TO THE SUB-BASE AND NEVER ON A FIVE SPOT BED**

### **Curing Time**

Symphony® jointing compound will be fully load bearing after 3 consecutive days of dry warm weather and humidity equal to or less than 65%.

Please note lower temperatures will lengthen the curing time and higher temperature will accelerate curing time. Additionally, once installed Symphony®

jointing compound will not start the curing process until dry weather and the cessation of rain.

Minimum laying temperature 3°C.

**Further Information**

For technical advice on commercial installations, or when confronted by unusual problems or circumstances, please contact Marshalls Technical Advisory Services on 0370 411 2233, or by email on [advisory.services@marshalls.co.uk](mailto:advisory.services@marshalls.co.uk)